



iVISOR MK4E/2

Load Moment Indicator

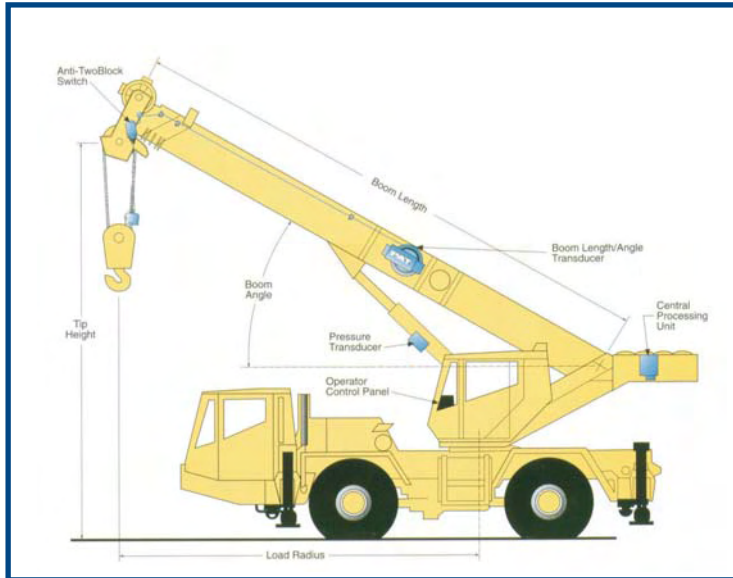


The iVISOR MK4E/2 displays a full range of precise information in the operator's cab. Designed for use on mobile cranes, the iVISOR MK4E/2 is installed and calibrated to the load chart of each crane - including specific load and geometric limits on boom length, angle, and operating radius. The iVISOR MK4E/2 load moment indicator gives the operator the information necessary to fully utilize the crane's capacity while keeping within the working limits of the crane.

- ▶ Displays actual and allowable load, boom length, boom angle, and load radius
- ▶ Alerts the operator in an impending two block condition
- ▶ Integrated lightbar provides a quick reference of the cranes utilization
- ▶ Quick and easy setup through the operator's console
- ▶ User-friendly console
- ▶ Meets SAE and ANSI B-30.5 standards



TECHNICAL DATA



Improves Efficiency and Productivity

Quick & Easy Calibration - Exclusive AccuCal calibration procedure done through the operator's console.

Measures True Load Moment - By measuring true load moment, the iVISOR MK4E/2 senses boom dynamics, load swingout, wind loading, shock load, and effects of boom deflection.

Self-Diagnostics - Continuously monitors system and sensors. Error codes are displayed to help identify problems and minimize downtime.

Control Lever Lockout - When the LMI system senses an overload or an impending two-block condition, the iVISOR MK4E/2 provides a relay output which can be used to engage an optional lever lockout.

Description	iVISOR MK4E/2
Power Supply	12 Vdc (opt. 24Vdc)
Max Consumption	< 500M A
Analog Inputs	8
Digital Inputs	5
Digital Outputs	4
System Rated	IP65
Operating Temperature	-13°F to +158°F

Other products from Hirschmann



iVISOR maestro

Upgrade existing PAT/Hirschmann LMI's to the latest technology



iSCOUT PRS80

Wireless multi-sensor indicator for mobile cranes

Specifications are subject to change without notice.

